

What is MOVE and why did the partners choose the SUMO model for the evaluation of the project?

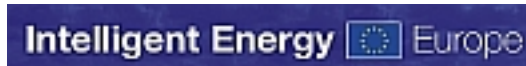
**Sustainable Transport and Mobility –
Challenges and Approaches**

**EU Sustainable Energy Week, Brussels
30th January 2008**

Partners in MOVE:



EVE | Ente Vasco de la Energía



Objectives

Contribute to the reduction of greenhouse gas emissions through:

- Raising the awareness of the benefits of sustainable transport modes among local authorities, companies and public in general
- Obtaining changes in people's attitudes and behaviour
- Preparing for a modal shift towards less energy intensive transport modes
- Dissemination of Good examples

Mobility project

The partners in MOVE will

1. Create virtual Mobility Agencies to coordinate activities with strategic partners
2. Build local and regional networks of key actors and other stakeholders to support and promote their activities
3. Establish energy balances for their regions
4. Under go training in Mobility Management
5. Realize projects of their own on a local level
6. Use a common evaluation model to allow benchmarking of the results obtained.

Local projects

Smart traveller

Car pooling website

Walking bus Clean Moves

Rural transport initiative

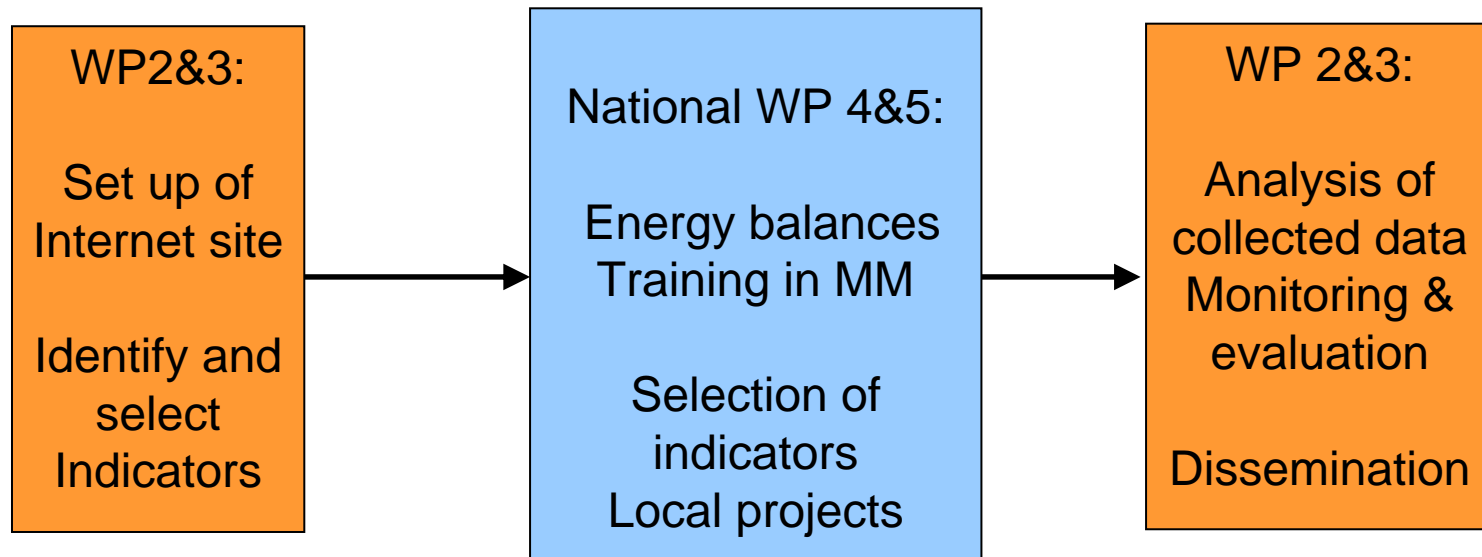
Mobility plan for public companies

Plan of action for Zilina

Without a car school day

Mobility Week

Interacting transnational and national work packages



Why monitor and evaluate?

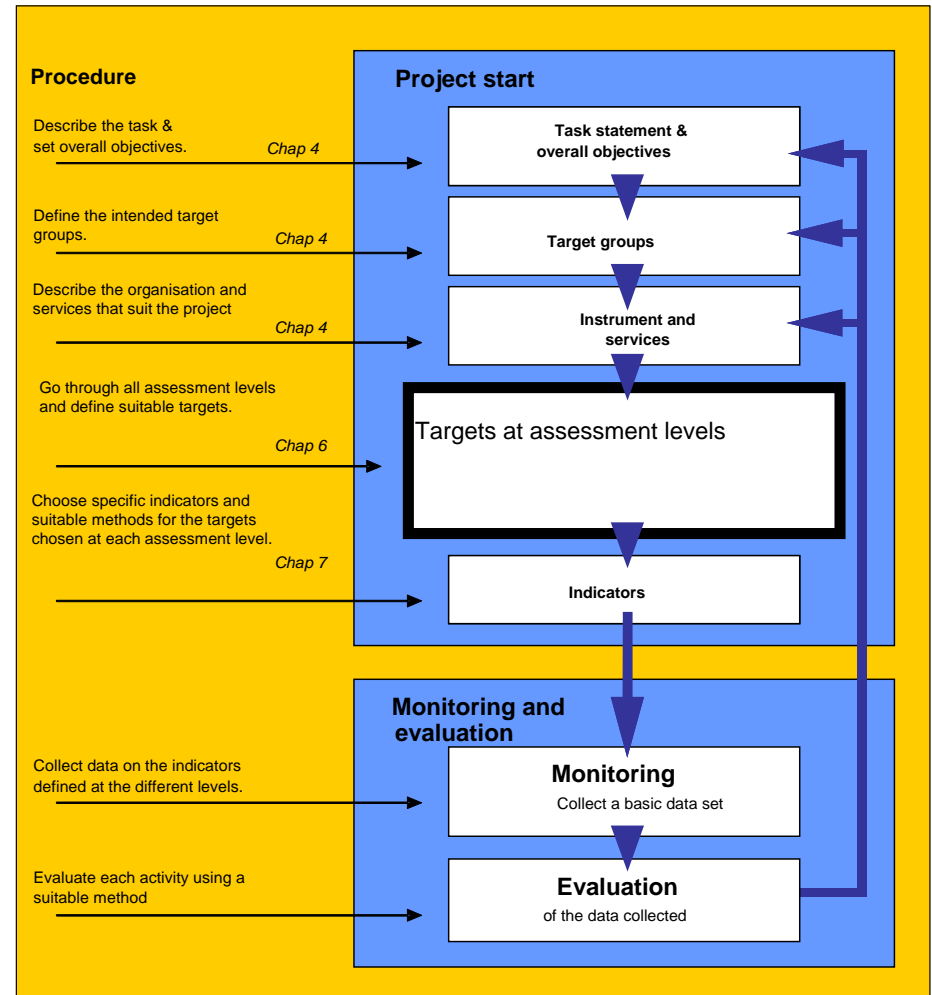
- In MOVE, we must be able to:
 - Know that we are actually heading towards the goals
 - Show the benefits of our efforts and whether we are effective
 - Provide input for future investments
 - Share experiences from the project
 - Increase the knowledge base in order to produce cause and effect relationship

Why SUMO?

- SUMO is a method for systematic planning, evaluation and management of projects in the field of travel and transport.
- It is a further development of the evaluation toolkit called MOST-MET that was drawn up as part of the European project called MOST, Mobility management Strategies for the next decades i.e. based on existing European initiatives.
- SUMO was translated into Swedish and adapted to suit Swedish conditions by Trivector on the commission of the Swedish Road Administration

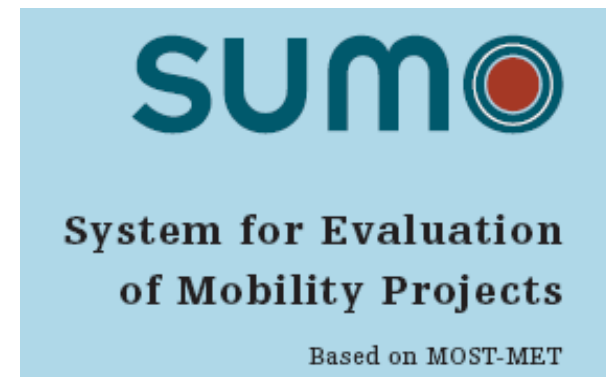
Why SUMO?

- ❑ Offers common indicators to similar projects
- ❑ Targets, indicators and results can be specified at different levels
- ❑ It is of great help in project planning and in setting relevant goals
- ❑ Makes SUMO a very good tool for the project coordinator



Early results

- Internet site
 - ✓ www.move-project.org
- Project consortium trained in MM
 - ✓ e-ATOMIUM
- Indicators based on existing European initiatives
 - ✓ SUMO translated into English
 - ✓ 1st workshop at kick-off meeting
- Mobility agencies
 - ✓ Created within partner organisations



Thank you for your attention!

Hannele Johansson
Project coordinator for MOVE
Energy Agency for Southeast Sweden Ltd.

Hannele.johansson@energikontor-so.com

www.move-project.org

